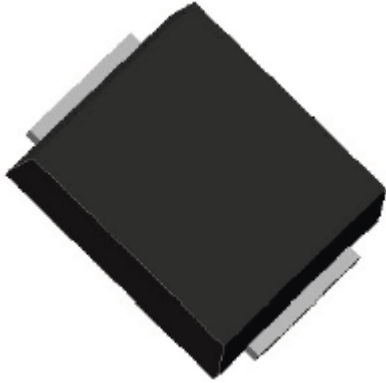


Surface Mount Transient Voltage Suppressor



Features

- Ideal for automated placement
- High surge current capability
- Meets MSL level 1, per J-STD-020, LF maximum peak of 260 °C
- Bi-directional TVS
- Glass passivated junction
- Low clamping voltage under surge

Typical Applications

- High power DC bus protection

Mechanical Data

- **Package:** SMG
Molding compound meets UL 94 V-0 flammability rating, RoHS-compliant
- **Terminals:** Tin plated leads, solderable per J-STD-002 and JESD22-B102

■ Maximum Ratings (T_a=25°C Unless otherwise specified)

PARAMETER	SYMBOL	UNIT	VALUE
Peak power dissipation, with a 10/1000us waveform ⁽¹⁾ (Fig.3)	P _{PPM}	W	15000
Peak pulse current, with a 10/1000us waveform ⁽¹⁾	I _{PPM}	A	See Next Table
Peak pulse current rating per 8/20μs waveform ⁽⁵⁾ IEC 61000-4-5	I _{pp}	A	2500
Storage temperature	T _{stg}	°C	-55 ~+150
Junction temperature	T _j	°C	-55 ~+125

(1)、 Non-repetitive current pulse, per Fig. 3 and derated above T_A= 25°C per Fig.2.

(2)、 Non-repetitive current pulse, per Fig. 5

■ Electrical Characteristics (T_a =25°C unless otherwise noted)

Part Number	Breakdown Voltage VBR@IT			Maximum Reverse Leakage I _R @V _{RWM} (μA)	Working Peak Reverse Voltage V _{RWM} (V)	Maximum Reverse Surge Current IPP(A)	Maximum Clamping Voltage V _c @ I _{pp} (V)
	Min(V)	Max (V)	IT(mA)				
SMGJ100CA	111	123	1	5	100	92.7	162

■ Performance Graphs

FIG.1 V-I Characteristic

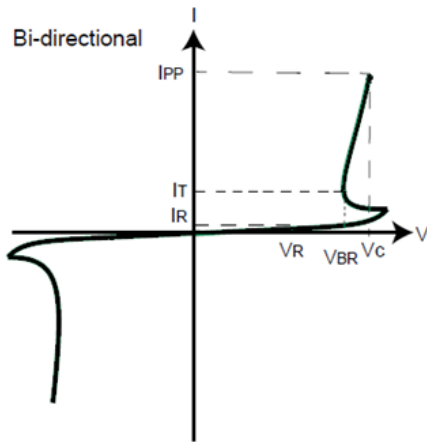


FIG.2 Pulse Derating Curve

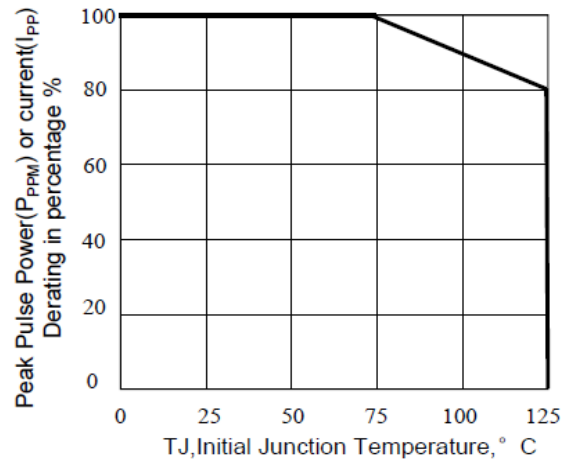


FIG.3: Current 10/1000us Waveform

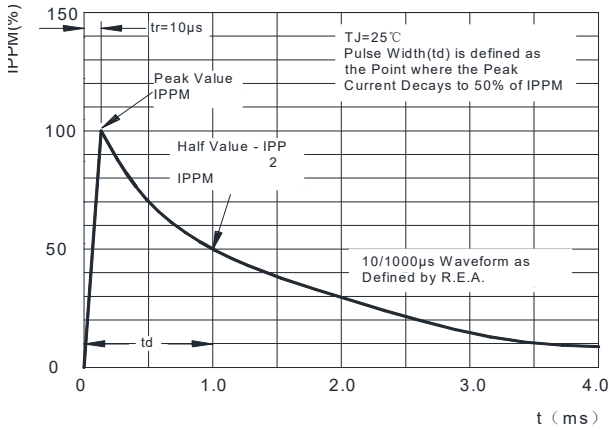


FIG.4: Typical VBR vs. junction temperature

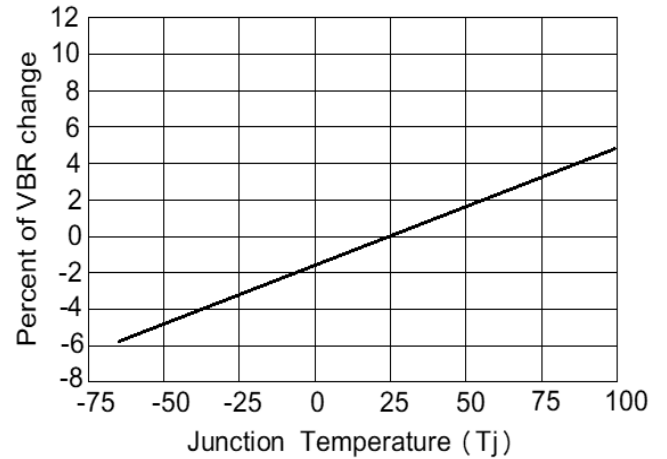
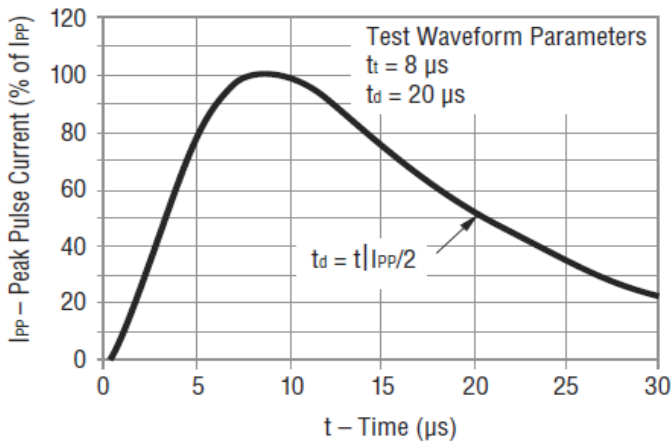


Fig.5 Current 8/20us Waveform per IEC 6100-4-5



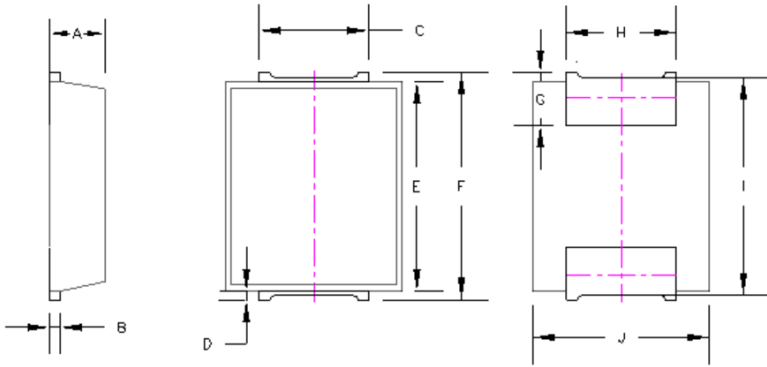
■ Ordering Information(Example)

PREFERRED P/N	PACKAGE CODE	UNIT WEIGHT(g)	MINIMUM PACKAGE(pcs)	INNER BOX QUANTITY(pcs)	OUTER CARTON QUANTITY(pcs)	DELIVERY MODE
SMGJ100CA	F1	Approximate 0.60	1500	3000	15000	15" reel



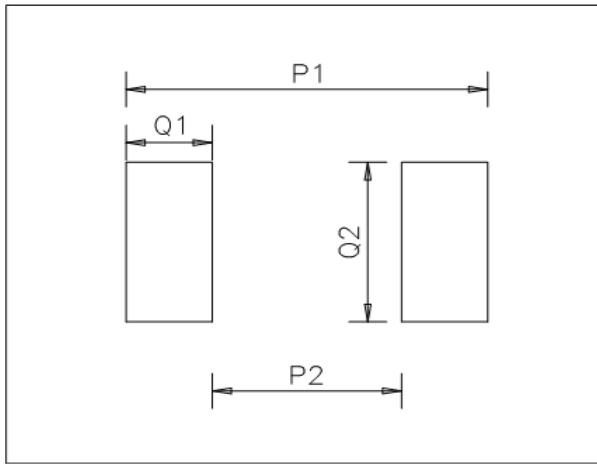
SMGJ100CA

■ Outline Dimensions



SMG		
Dim	Min	Max
A	2.45	2.55
B	0.45	0.55
C	4.90	5.10
D	0.40	0.60
E	9.20	9.60
F	10.20	10.60
G	2.30	2.50
H	4.90	5.10
J	7.90	8.10
I	9.9	10.10

■ Suggested pad layout



Dim	Millimeters
P1	10.70
P2	5.60
Q1	2.60
Q2	5.10

■ Marking Information



Note:

- 1、 All marking is at middle of the product body
- 2、 All marking is in laser printing
- 3、 SMGJ100CA is part no.
- 4、 YWW is date code, "Y" is year, "WW" is week.

For instance:

- 3th week of 2021, date code is 103
- 15th week of 2021, date code is 115



Disclaimer

The information presented in this document is for reference only. Yangzhou Yangjie Electronic Technology Co., Ltd. reserves the right to make changes without notice for the specification of the products displayed herein to improve reliability, function or design or otherwise.

The product listed herein is designed to be used with ordinary electronic equipment or devices, and not designed to be used with equipment or devices which require high level of reliability and the malfunction of which would directly endanger human life (such as medical instruments, transportation equipment, aerospace machinery, nuclear-reactor controllers, fuel controllers and other safety devices), Yangjie or anyone on its behalf, assumes no responsibility or liability for any damages resulting from such improper use of sale.

This publication supersedes & replaces all information previously supplied. For additional information, please visit our website [http:// www.21yangjie.com](http://www.21yangjie.com) , or consult your nearest Yangjie's sales office for further assistance.